

Dental Excellence
in every area.



Practice equipment

KaVo treatment units and lights, dental chairs, patient communication systems, dental microscope and additional operatory accessories.



Instruments

Dental straight and contra-angle handpieces, turbines, air polishing systems and small equipment for all application areas including diagnosis, prophylaxis, restorative, surgery, endodontics and instrument care.



Imaging

Intraoral X-ray equipment, sensors and imaging plate systems, panoramic and cephalometric in combination with CBCT, as well as dedicated CBCT devices for every indication in dentistry.



CAD/CAM

Dental CAD/CAM solutions for premium aesthetic, natural-looking and long-lasting restorative work, suitable for dentists and dental technicians.

KV_07_17_0028_REVO © Copyright KaVo Dental GmbH.

Scan eXam™
Fast, direct and ingeniously digital.



The products, features and services shown and described in this catalogue are not available in all countries. All specifications were correct at the time of publication. KaVo Dental GmbH assumes no liability for deviations in colour or form from the illustrations, mistakes or printing errors and reserves the right to make changes to the brochures at any time. Reprinting, even just of excerpts, is only permitted with the consent of KaVo Dental GmbH.

Scan eXam™ and KaVo™ are either registered trademarks or trademarks of Kaltenbach & Voigt GmbH in the United States and/or other countries. iDOT™ is either registered trademark or trademark of Kavo Kerr Group Finland in the United States and/or other countries. All other trademarks are property of their respective owners.

Palodex Group OY | Nahkelantie 160 | FI-04300 Tuusula | Finland
www.kavokerr.com

KaVo Dental GmbH | Bismarckring 39 | 88400 Biberach | Germany
www.kavo.com

KAVO
Dental Excellence

KAVO
Dental Excellence

KaVo combines Dental Excellence with outstanding imaging expertise.

Scanning resolution 17 lp/mm. Image bit depth 16 bit.

Occlusal 4C image



Size 0

22 x 31 mm
734 x 1034 Pixel
1.08 MB

Size 1

24 x 40 mm
800 x 1334 Pixel
1.53 MB

Size 2

31 x 41 mm
1034 x 1368 Pixel
2.03 MB

Size 3

27 x 54 mm
900 x 1800 Pixel
2.32 MB



✓ Superior image quality

✓ Clinically proven performance

✓ Excellent comfort

Accurate and consistent diagnostic results.

Clinical image quality.

The Scan eXam™ imaging plate system consistently provides images with high details and excellent contrast. The wide dynamic range associated with the imaging plate ensures that the best possible diagnostic representation is achieved every time. With its fast image processing, the system adapts really well to an efficient practice workflow.

Professional software solutions.

The KaVo Scan eXam™ scanner comes with imaging software specifically developed for demanding use at practices. Efficient imaging tools enable professional image optimisation, while the excellent interoperability supports connections with other software applications or a DICOM environment.

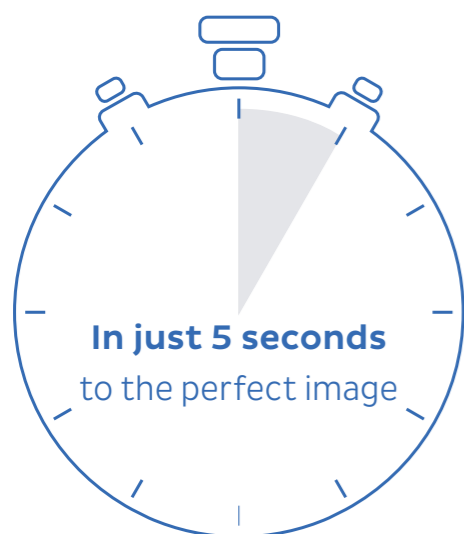


Excellence in productivity.

Excellent results extremely fast.

The Scan eXam™ device sets the standard in terms of image availability. The entire process from reading to erasing is quick enough to ensure a rapid workflow with no waiting time, even when several plates are being fed in. Imaging plates provide you with superior image quality and support a wide range of applications. The wide dynamic range of

the plate compensates over- or underexposure, which really helps pick out diagnostic information. The system is compatible with both AC and DC X-ray tubes and delivers excellent clinical imaging results of consistent quality.



Plates	Seconds
Size 0	5
Size 1	6
Size 2	6
Size 3	8

An investment you can rely on.

A cost-efficient system.

The system communicates via the local area network and is not restricted to one dedicated PC as USB-connected systems are. This high degree of flexibility means one the Scan eXam™ scanner can be used at the same time at up to 8 workstations. This represents a very cost-effective imaging solution for practices with multiple users and imaging devices.

Consistent hygiene.

A comprehensive hygiene system, based on single-use protective covers, plate protection, and contact-free infeed of plates prevents plates and the surface of the device becoming contaminated. A new feature is the patented UV disinfection system that inactivates viruses and bacteria on the plate transport mechanism, thereby also preventing any cross-contamination. This ensures total hygiene.

The benefit of our experience.

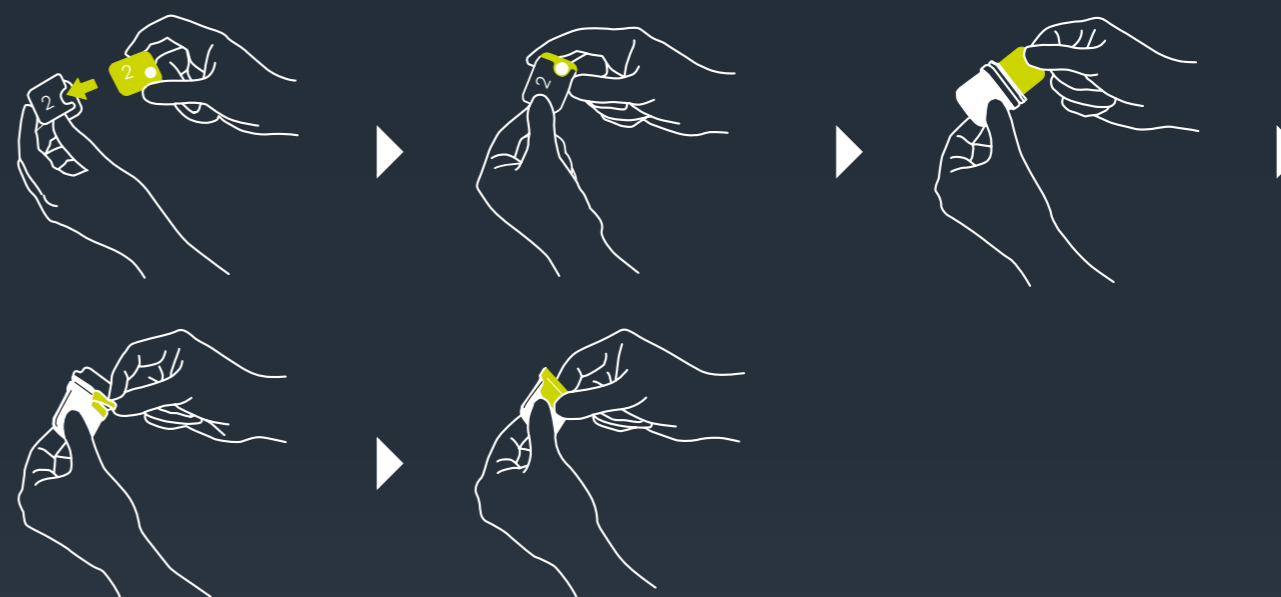
Like all KaVo products, the KaVo Scan eXam™ system has been designed with great attention to detail. This means image results of very high diagnostic quality can be achieved for a long time to come.

Familiar, easy and hygienic handling.

The Scan eXam™ scanner wakes up from stand-by mode and can be operated without touching the system. This workflow with single use hygiene accessories provides safe operation with minimised risk of cross-contamination.

Additionally the Scan eXam™ imaging plate system has an integrated, automatic UV cleaning system (patented) to maximise safety for the user and patients. There is no need to disassemble and clean the unit regularly.

As easy to position as film:



UV disinfection system.

The Scan eXam™ system introduces a smart and automated internal ultraviolet (UV) disinfection feature that inactivates viruses and bacteria on the plate transport mechanism.

UV radiation is known to eliminate at least 99.9% of viruses and bacteria, providing for example germicidal safety against:

- HIV
- Hepatitis A/B/C
- Corynebacterium diptheriae
- Mycobacterium tuberculosis
- Herpes

Easy integration.

Flexible set-up in offices.

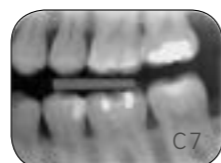
The Scan eXam™ imaging plate system is highly compact and can be installed on or under a desk or in a cabinet – or even mounted on a wall.

Scratch-resistant imaging plates.

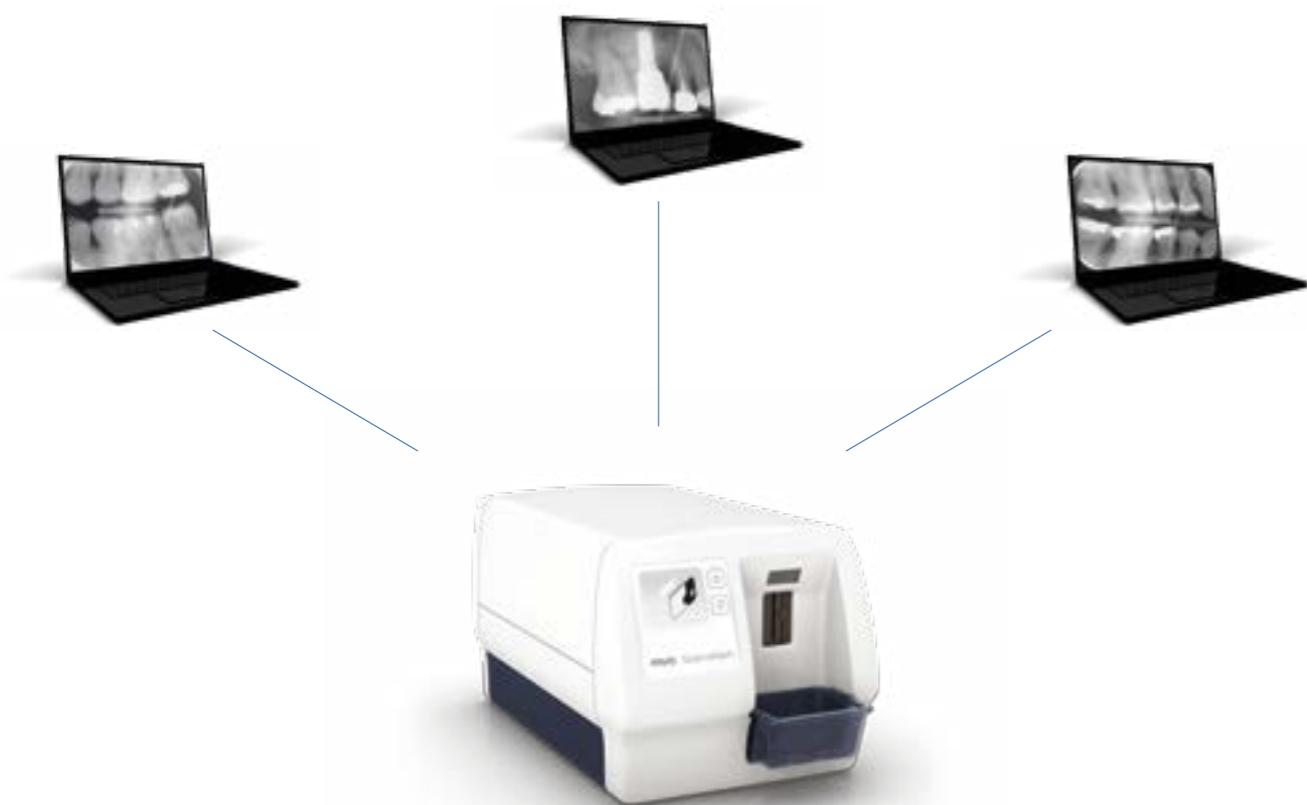
The Scan eXam™ device uses the very latest imaging plate technology. The imaging plates have a highly scratch-resistant surface, ensuring high-quality diagnostic results with every use over a long period of time.

Patented iDOT™ system.

Check the quality of your imaging plates with the unique iDOT™ marking system. iDOT™ marking can be seen on each image taken, making it possible to identify plates where quality is declining. Damaged plates can be replaced immediately.



One Scan eXam™ device can be easily shared by up to 8 operatories over a local network.



Technical specifications.

Technology	Reusable imaging plate (Photo Stimulable Phosphor plate)
Pixel size	30 µm (Super resolution) 60 µm (High resolution)
Scanning resolution	17 line pairs / mm
Image bit depth	16 bit
Readout time	5 – 8.8 seconds
Connection	Standard network connection (Ethernet RJ45), DHCP
Dimensions (H x W x D)	196 mm x 215 mm x 382 mm (7.7 x 8.5 x 15 inches)
Weight	10.3 kg (22.7 lbs)
Operating voltage	100 – 240 V, 50/60 Hz
Operating current	Less than 1.3 A
Operating environment	+10°C – +40°C, 30 – 90 RH%, 700 – 1060 hPa

Dimensions.

